

2024
Edition



SUPPLY ARRANGEMENT

SYSTÈME D'APPROVISIONNEMENT

SA# E60PQ/140003/D
Furniture for Work Spaces - Category 6

Nightingale

DESIGNED.
BUILT.
PACKAGED.



FIÈREMENT **CANADIEN**

PROUDLY **CANADIAN**



Since 1928, Nightingale is a leading designer and manufacturer of ergonomic office seating. Located in the heartland of southern Ontario, this almost 100 year old company places great importance on design, the environment, community service and the health and well-being of our customers and employees.

Nightingale has earned a reputation for well-made, durable seating of the finest quality. With its state of the art Innovation Lab and accredited Ergonomic Chair Testing laboratory, Nightingale is able to produce consistently superior seating throughout its 250,000 sq. ft production facility.

Nightingale has been nominated and accepted numerous design awards; holds multiple patents; and is a leader in the industry for quality.

Depuis 1928, Nightingale est un chef de file dans la conception et la fabrication de fauteuils ergonomiques. Située au cœur du sud-est Ontarien, cette compagnie de plus de 85 ans d'existence accorde une grande importance sur le design, l'environnement, le service à la communauté, la santé et le bien-être de ses clients et employé(e)s.

Nightingale s'est taillé une réputation de première qualité dans la fabrication et la durabilité de ses produits. Doté d'un centre de Recherche et Design moderne ainsi que d'un laboratoire d'essai accrédité, Nightingale est en mesure de produire des fauteuils de qualité supérieure dans son usine de fabrication de 250,000 pieds carrés.

Banquette



Trullo | 3001
Individual



Trullo | 3002
Two Seater



Trullo | 3003
Three Seater

Individual Private Lounge Chairs



Trullo | 3001
Individual

Lounge Chairs



Stratford | 2001
With Armrest



Emily | 611
Without Armrest

Sofas



Danforth II | 1222
Two Seater



Danforth II | 1223
Three Seater

Tablet Chairs



NXO | 6401UF-ATR
With Armrest - Right



NXO | 6401UF-ATL
With Armrest - Left



NXO | 6401UF
Without Armrest

Upholstered Ottoman



Stephanie | 1400
Medium Square



AT A GLANCE

Bar Stools



Butterfly | 810UFST
Bar Height



Butterfly | 810
Bar Height



Butterfly | 809UFST
Bar Height



Butterfly | 809
Bar Height



Butterfly | 811
Counter Height



Butterfly | 808
Counter Height

Upholstered Stool with Casters



Stool | 1000RLC
Round

Upholstered Stool without Casters



Stool | 1000GL
Round

Kitchenette Chairs



Butterfly | 808UFST
Counter Height



Butterfly | 811UFST
Counter Height

SUPPLY ARRANGEMENT

April 23, 2029

SA#: EP06PQ/140003/D

**CALL UPS AGAINST THIS
SUPPLY ARRANGEMENT
MUST BE ISSUED TO****NIGHTINGALE CORPORATION**

2301 Dixie Road
Mississauga, ON L4Y 1Z9
nightingalechairs.com

EGON SZENTTAMASY

Vice-President of Commercial Sales
egon@nightingalechairs.com
(905) 896-3434 x 239

Toll Free: 1 (800) 363-8954

Toll Free Fax: 1 (800) 637-6784

Visa & Mastercard orders are accepted.

**PRODUCT INFO AND
ORDERING TERMS**

The fabric for all products is Grade 1. Fabric & Vinyl listed on our website at www.nightingalechairs.com/textiles

The federal government uses a specific Purchase Order form to place orders under the Supply Arrangement. The Purchase Order made out to Nightingale Corp. must show the chair model number, fabric colour selected, price, freight charge and the installation charge as separate line items.

Freight delivery charges are based on being prepaid and charge and are to be listed as a separate line item on the purchase order.

Installation charges are to be quoted on an order by order basis and listed as a separate line item on the purchase order.

Nightingale will produce, ship and invoice for the goods, freight and installation charges, carry the receivable, and collect payment.

Delivery is stated as three (3) weeks after receipt of order, and installation will be carried out during normal working hours, eg. 9:00 A.M. to 5:00 P.M., Monday through Friday.

SUPPLY ARRANGEMENT

April 23, 2029

SA#: EP06PQ/140003/D

**LES DEMANDES D'INFORMATION
CONCERNANT LE SA DOIVENT
ÊTRE ADRESSÉES A****NIGHTINGALE CORPORATION**

2301 Dixie Road

Mississauga, ON L4Y 1Z9

nightingalechairs.com**EGON SZENTTAMASY**

Vice-President of Commercial Sales

egon@nightingalechairs.com

(905) 896-3434 x 239

Téléphone sans frais: 1 (800) 363-8954

Télécopieur sans frais: 1 (800) 637-6784

Nous acceptons les commandes payées par carte Visa et Mastercard.**INFORMATION SUR LE PRODUIT ET
CONDITIONS D'ACHAT**

Le tissu pour tous les produits est en grade 1.

Retrouvez nos tissus et vinyles au www.nightingalechairs.com/textiles

Le gouvernement fédéral utilise un formulaire de bon d'achat spécial pour placer une commande sous le SA. Le bon d'achat est émis au nom de Nightingale Corp. en y indiquant le numéro de modèle de la chaise et la couleur du tissu. Les frais de transport et les frais d'installation devront être listés sur une ligne séparée.

Les frais de livraison sont prépayés et chargés et doivent être identifiés sur une ligne séparée sur le bon d'achat.

Les frais d'installation doivent être soumissionnés pour chacune des commandes et doivent être identifiés sur une ligne séparée sur le bon d'achat.

Nightingale produira, expédiera et facturera les biens, incluant le transport et les frais d'installation, supportera les recevables et collectera le paiement.

Le délai de livraison est de trois (3) semaines suite à la réception de la commande et l'installation s'effectuera durant les heures normales de travail soit de 9h00 à 17h00, du lundi au vendredi.



TRULLO 3001-DT-EL, 3002-DT-EL

The Emily is a dual-model collection consisting of a lounge chair and a cylindrical table-stool. Playful and multi-functional, the Emily is a winning combination of comfort and creativity.

STANDARD FEATURES

- High-density, resiliency foam for comfort and support.
- Molded nylon black base.
- Freestanding side table (610 model only). Black only.
- Pneumatic adjustment mechanism with auto-return feature and single-position lock.
- ANSI/BIFMA approved and TB117-2013 compliant.

GENERAL INFORMATION

- Upholstery:
 - Model 611 - 2 yd/chair
 - Model 610 - 1.25 yd/chair



Emily 611-DT



Emily 610

Model	Description	1	2	3	4	5	6	7	8	Leather Plus	Madras Leather	Princess Leather
610	Stool / Table	798	827	855	883	912	940	969	997	890	1072	1137
611	Lounge Seat	2463	2577	2767	2958	3148	3339	3528	3720	2965	3592	4312



Emily 611-DT (Lounge Seat) & 610 (Stool/Table)

OPTIONS

Description	Suffix	Models	Upcharge
Dual Tone Upholstery*	DT	611	0

*When selecting Dual Tone Upholstery chair will be graded in the higher of two textiles selected.

DIMENSIONS

Model	Overall Width	Overall Depth	Overall Height	Seat Height	Weight	Volume 1 per carton
610	15.5"	15.5"	18"	16.5"	28 lbs	6 cu ft
611	28.5"	31.5"	36.5"	17"	60 lbs	N/A

Lightweight and mobile, the Butterfly encourages freedom and versatility in your office space. It is perfect for work stations and multi-use rooms.

STANDARD FEATURES

- Frame on all models except task chairs 7/8" O.D 16 gauge round steel tubing.
- Ideal for informal, flexible spaces where reconfiguration is encouraged, smaller scale is important, and budget is a concern.
- Task chairs feature swivel mechanism and a 5-pronged nylon base with carpet casters.
- Simple to stack. Stacks 6 high (808 & 811).
- Contemporary design with a durable polypropylene seat and back shell (black only).
- Standard with black frame finish.
- Waterfall seat to reduce muscle fatigue.
- ANSI/BIFMA approved and TB117-2013 compliant.

GENERAL INFORMATION

- Upholstery:
 - Seat only - ¾ yd



Butterfly 811UFST

OPTIONS

Description	Suffix	Models	Upcharge
Twin Wheel Carpet Casters	CA	808, 811	84
2" Hard Surface Casters	TC	800, 807	94
2" Hard Surface Casters	CA, TC	808, 811	144
Chrome Legs	CH	808, 809, 810, 811	66
Chrome Base	CH	800, 807	125
Sit / Stand Drafting Stool	DS	800, 807	157

DIMENSIONS

Model	Overall Width	Overall Depth	Overall Height	Seat Height	Weight 3 or 1 per carton	Volume 1 per carton
800	24"	23.5"	30.5" - 35.5"	16" - 21"	1 per carton	14.5 cu ft / 11 cu ft
808 / 811	22.5"	21.5"	32.5"	18"	3 per carton	14.5 cu ft / 11 cu ft
809 / 810	20"	25"	44.5"	30"	1 per carton	14.5 cu ft / 11 cu ft

Model	Description	Plastic Shell Black Only	1	2	3	4	5	6	7	8	Leather
808	Stacker Armless	319									
808UFST	Stacker Armless Upholstered Seat Only		395	410	424	438	453	467	480	495	480
811	Stacker with Arms	390									
811UFST	Stacker with Arms Upholstered Seat Only		453	467	480	495	509	523	537	551	558
809	Barstool Armless	537									
809UFST	Barstool Armless Upholstered Seat Only		602	616	630	644	657	686	714	743	692
810	Barstool with Arms	607									
810UFST	Barstool with Arms Upholstered Seat Only		678	700	714	728	743	757	770	784	757
807	Task Armless	517									
807UFST	Task Armless Upholstered Seat Only		586	602	616	630	644	657	672	686	672
800	Task with Arms	621									
800UFST	Task with Arms Upholstered Seat Only		692	705	720	734	748	762	777	792	770



808



811



809



810



807



800

Stool

1000

This economical, comfortable stool is an ideal chair for use in medical, dental, laboratory, or small-space environments where mobility and quality are essential.

STANDARD FEATURES

- Swivel mechanism featuring a 5.5" pneumatic seat height adjustment.
- High density, high resiliency foam for added durability and comfort (1000, 1000WB).
- Finish: mechanism, base, casters, and trim standard in black.
- 5-prong, heavy-duty nylon base with 2" dual wheel carpet casters.
- Molded polyurethane seat and back for durability and hygienic requirements (1010).
- ANSI/BIFMA approved and TB117-2013 compliant.

GENERAL INFORMATION

- Upholstery:
 - Model 1000 - 0.5 yd/chair
 - Model 1000WB - 1.5 yd/chair
 - Model 1009 - 1 yd/chair



Stool 1000-WB-DS



Stool 1009

Model	Description	1	2	3	4	5	6	7	8	Madras Leather	Princess Leather
1000	Stool	431	460	495	523	551	580	607	636	720	819
1000WB	Stool with Back and Casters	644	686	728	770	812	855	897	940	933	1029
1009	Stool Trumpet Base	531	558	586	616	644	672	700	728	806	869
1010	Stool with Polyurethane Seat Back	841									



1000



1000WB



1010



1009

OPTIONS

Description	Suffix	Models	Upcharge
Non-Marking Hard Surface Sit to Lock Casters / When seated	RLC	1000, 1000WB, 1010	78
Non-Marking Hard Surface Stand to Lock Casters / When standing	SLC	1000, 1000WB, 1010	78
Glides	G	1000, 1000WB, 1010	63
Height Adjustable Foot Ring	DS	1000, 1000WB, 1010	134
Hard Surface Casters	TC	1000, 1000WB, 1010	85
Chrome	CH	1000, 1000WB, 1010	71
Gas Lift	GL	1009	71

DIMENSIONS

Model	Overall Width	Overall Depth	Overall Height	Seat Height	Weight	Volume
1000	24"	24"	16.5" - 22"	16.5" - 22"	18 lbs	12 cu ft
1000 WB	27.5"	27.5" - 30"	32" - 37"	16.5" - 22"	22 lbs	12 cu ft
1010	25"	25" - 27"	30.75" - 35"	15.5" - 20.5"	30 lbs	12 cu ft



The Danforth II Series brings a classic and refined look to your lounge space. Its modular construction is easy to move, repair, and assemble. No tools required. The Danforth is a versatile solution for all lounge seating needs.

STANDARD FEATURES

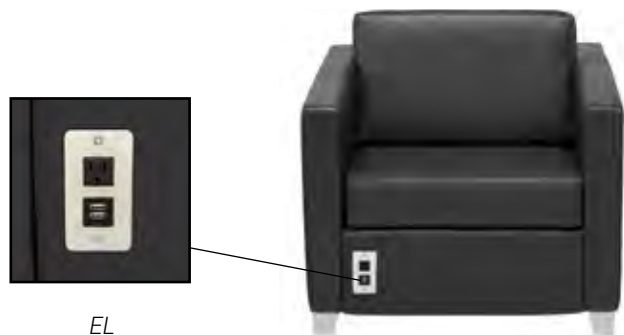
- Modular construction.
- High density foam for durability and comfort.
- Components are easily replaceable.
- No tools required, parts slide together like a bed frame.
- Black plastic glides.
- ANSI/BIFMA approved and TB117-2013 compliant.

GENERAL INFORMATION

- Upholstery:
 - Model 1221 - 6 yd/chair
 - Model 1222 - 9 yd/chair
 - Model 1223 - 13 yd/chair
- Please specify outlet location for EL option
 - *EL-RH* for right handed sitter
 - *EL-LH* for left handed sitter

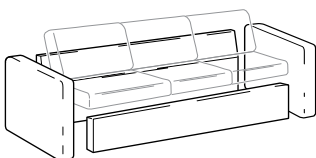


Danforth II 1221-CH



1221-EL-RH-CH

Modular System:



1221-CH-ATL

Model	Description	1	2	3	4	5	6	7	8	Leather Plus	Madras Leather	Princess Leather
1221	Modular Club Chair	1886	2027	2217	2449	2611	2775	2937	3100	2463	3600	4065
1222	Modular Two Seater Sofa	2611	2894	3175	3458	3727	3995	4263	4531	3480	4601	5273
1223	Modular Three Seater Sofa	3416	3820	4185	4552	4922	5287	5654	6021	4587	6247	7198



1221



1222-CH



1223-CH



1221-MF-CH



1221-CH



1221-RD-CH

OPTIONS

Description	Suffix	Models	Upcharge
Brushed Aluminum Legs	CH	All Models	204
Right Handed Swivel Tablet Top (<i>Black laminate</i>)	ATR	All Models	685
Left Handed Swivel Tablet Top (<i>Black laminate</i>)	ATL	All Models	685
Modern Flaired Arm / Rolled Arm Option	MF / RD	All Models	213
Electrical / USB Port (Specify LH or RH as per general info.) 10 Foot Cord	EL	All Models	353
Braking Casters (Front & Back)	BRK	All Models	213

DIMENSIONS

Model	Overall Width	Overall Depth	Overall Height	Seat Height	Weight	Volume
1221	32"	32"	27.5"	17"	95 lbs	12 cu ft
1222	56"	32"	27.5"	17"	135 lbs	23 cu ft
1223	80"	32"	27.5"	17"	174 lbs	28 cu ft

Stephanie

1400

The Stephanie is a square, streamlined chair perfect for smaller collaboration and guest spaces. Mix-and-match to brighten up your space. The Stephanie is versatile, stylish, and fun.

STANDARD FEATURES

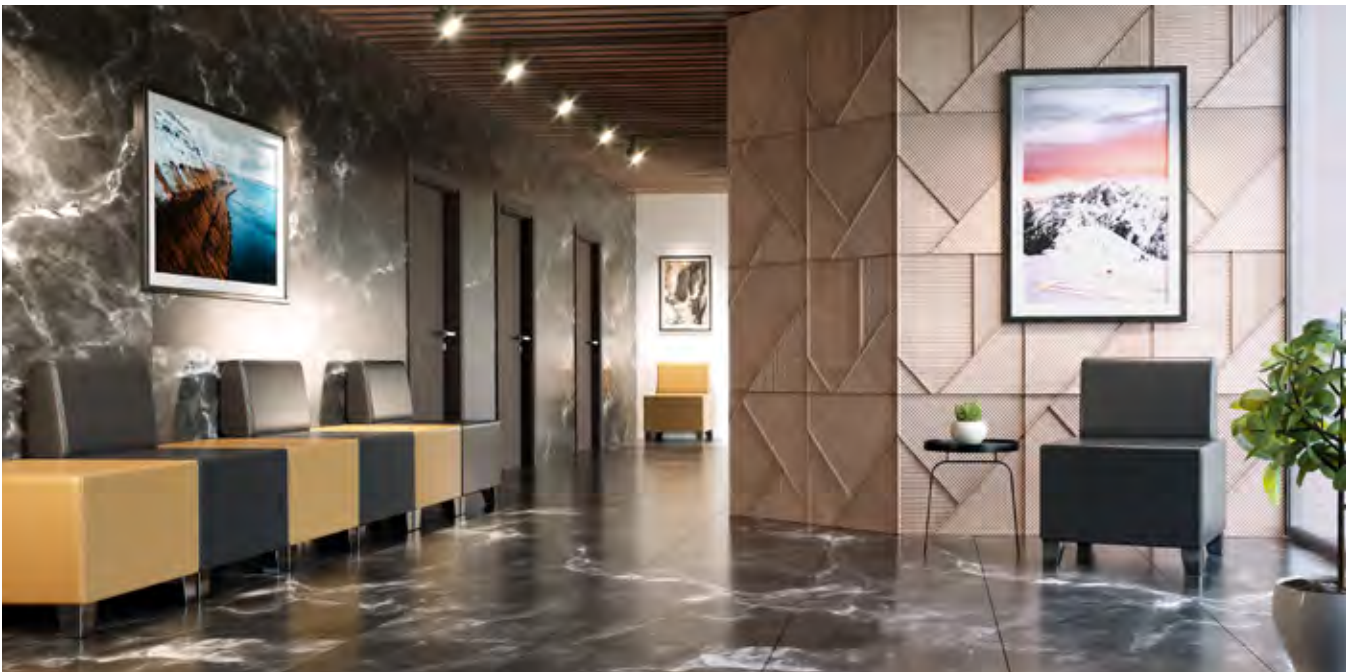
- Plywood construction for strength.
- Polished aluminum legs for elegant finished look.
- Fully upholstered seat and back. Available in two-tone upholstery.
- High-density, high-resiliency seat and back foam for comfort and support.
- The design is great for public and institutional environments.
- ANSI/BIFMA approved and TB117-2013 compliant.

GENERAL INFORMATION

- Upholstery:
 - Model 1401 - 3.5 yd/chair
 - Model 1410 - 2.5 yd/chair



Stephanie 1401



Stephanie 1401-DT, 1410, 1401

Model	Description	1	2	3	4	5	6	7	8	Leather Plus	Madras Leather	Princess Leather
1401	Lounge Seating with Back Rest	1448	1590	1702	1828	1956	2082	2210	2337	1842	2267	2591
1410	Lounge Seating	1264	1350	1434	1518	1603	1688	1772	1857	1533	1828	2082
1412	Lounge Corner Seating	1837	1979	2091	2217	2345	2471	2599	2726	2231	2656	2980



1401



1410



1412

OPTIONS

Description	Suffix	Models	Upcharge
Dual Tone Upholstery*	DT	1401	0
Ganging	GANG	1401, 1410	107

*When selecting Dual Tone Upholstery chair will be graded in the higher of two textiles selected.



3 possible configurations shown in above images.

DIMENSIONS

Model	Overall Width	Overall Depth	Overall Height	Seat Height	Weight	Volume
1401	24"	24"	30.5"	18"	42 lbs	14 cu ft
1410	24"	24"	18"	18"	31 lbs	14 cu ft

The Trullo provides semi-private seating with fully upholstered, high back and side panels. Available in solid or dual-tone upholstery with optional built-in power/USB socket, its a workstation and a chair, all in one. Find your focus.

STANDARD FEATURES

- Modular construction.
- High-density, high-resiliency seat and back foam for comfort and support.
- No tools required. Parts slide together like a bed frame.
- Molded plywood shell for strength.
- Polished aluminum legs.
- ANSI/BIFMA approved and TB117-2013 compliant.

GENERAL INFORMATION

- Upholstery:
 - Model 3001 - 9 yd/chair
 - Model 3002 - 12 yd/chair
 - Model 3003 - 14 yd/chair
 - Model 3022 (Single Bench) - 2 yd/unit
 - Model 3047 (Double Bench) - 3 yd/unit
 - Model 3032 (Centre Table) - 2 yd/unit
- Two-Tone Upholstery:
 - Model 3001 - Outer 6 yd, Inner 5 yd
 - Model 3002 - Outer 8 yd, Inner 6 yd
 - Model 3003 - Outer 10 yd, Inner 8 yd
- Please specify outlet location for EL option
 - *EL-RH for right handed sitter*
 - *EL-LH for left handed sitter*

Note: Electrical Port consists of:

1 Electrical Outlet

2 USB Ports

Rating: AC 125V, 60Hz, 15A

USB Output: DC 5v, 4 2A

Power Cord Length: 6 feet



Trullo 3001-DT-EL, 3032



Trullo 3001-DT-EL

Model	Description	1	2	3	4	5	6	7	8	Madras Leather	Princess Leather
3001	One Seater	3523	3797	4228	4658	5089	5520	5950	6380	6062	7319
3002	Two Seater	4228	5018	5626	6233	6840	7447	8054	8659	8138	9873
3003	Three Seater	4652	6098	6810	7523	8236	8948	9662	10373	9710	11744
3022	Single Bench	1200	1264	1369	1475	1581	1688	1793	1900	1821	2082
3047	Double Bench	1547	1624	1758	1892	2027	2160	2295	2428	2330	2534
3032	Upholstered Table	1660	1709	1786	1864	1943	2019	2097	2174	2111	2330



3001-EL



3002



3003



3032



3022



3047

OPTIONS

Description	Suffix	Models	Upcharge
Dual Tone Upholstery*	DT	3001, 3002, 3003, 3022, 3047	0
Electrical Port (Specify LH or RH as per general info.)	EL	3001, 3002, 3003	353

*When selecting Dual Tone Upholstery chair will be graded in the higher of two textiles selected.

DIMENSIONS

Model	Overall Width	Overall Depth	Overall Height	Seat Height	Weight
3001	37"	31"	48"	18.5"	120 lbs
3002	55"	31"	48"	18.5"	160 lbs
3003	79.5"	31"	48"	18.5"	215 lbs
3022	22"	22.5"	18.5"	18.5"	40 lbs
3032	32"	32"	16"	N/A	95 lbs
3047	47"	22.5"	18.5"	18.5"	65 lbs

Stratford

2000

The Stratford is a fully upholstered comfortable lounge chair. Its integrated headrest provides optimal support for your whole body. Made for reading files or just taking a break, the Stratford brings living-room comfort into your office space.

STANDARD FEATURES

- Molded high density foam.
- Fully upholstered seat and back, allows for dual-tone upholstery for comfort and support.
- Swivel tilt lock mechanism with pre-set tension.
- Pneumatic seat height adjustment.
- Contoured, molded plywood shell for strength.
- Polished aluminum 4 star base on glides for added grip and scratch-resistant.
- ANSI/BIFMA approved and TB117-2013 compliant.

GENERAL INFORMATION

- Upholstery:
 - Model 2001 - 6 yd/chair
 - Model 2011 - 1 yd/char



Stratford 2001 & 2011



Stratford 2001 & 2011

Model	Description	1	2	3	4	5	6	7	8	Madras Leather	Princess Leather
2001	High Back Lounge Seat	2611	2724	2915	3105	3297	3444	3678	3869	3741	4461
2011	Ottoman	1058	1116	1200	1285	1369	1454	1539	1624	1561	1765



2001



2011

OPTIONS

Description	Suffix	Models	Upcharge
Dual Tone Upholstery*	DT	2001	0
Custom Embroidery*	EM	2001	227
Enersorb Foam Topper	E	2001	122

*When selecting Dual Tone Upholstery chair will be graded in the higher of two textiles selected.

*Standard charge for customer embroidery assumes an approved DST file will be provided at time of order placement. If a DST file needs to be created an additional \$300 list fee will apply. Note, there is a minimum order quantity of 8 units.

DIMENSIONS

Model	Overall Width	Overall Depth	Overall Height	Seat Height	Weight	Volume
2001	30"	31.5"	43"	16.5-18.5"	70lbs	N/A
2011	22"	17"	15"	N/A	18lbs	N/A



The NXO™ chair is a nesting, stacking, and storing chair that provides comfort, versatility, and style to any workplace. Available in classic or eye-catching colours, it is well-suited to any of your workspace needs.

STANDARD FEATURES

- Ergonomic support. Unique reclining motion of the back provides comfortable, relaxed support.
- Easy access. Folding seat allows the chair to nest horizontally, providing a smart storage solution.
- Seat consists of a ultra-comfortable ENERSORB™ foam that allows for greater blood circulation, reducing pressure points and providing extreme comfort.
- Space efficient. Vertical stacking capability of up to three chairs high provides even greater space efficient storage.
- Aeration. The perforated back with small holes enhances airflow and keeps the user cool and comfortable.
- Easy to move. Lightweight with durable casters.
- Frame, arms and trim standard in graphite.
- Light and clean aesthetic. Fits in without dominating the look or feel of the workspace.
- A visual companion to nontraditional work chairs, an ideal companion to the XO Collection of chairs.
- ANSI/BIFMA approved and TB117-2013 compliant.

GENERAL INFORMATION

- Upholstery: 1 yd/ chair
 - UF - 1½ yd/ chair
- Optional field installable fold away arm tablet available.
- Patented Design.



NXO™ 6401



NXO™ 6401-ATR

Model	Description	1	2	3	4	5	6	7	8	Madras Leather	Princess Leather
6401	Nesting Chair	883	940	1002	1058	1116	1173	1228	1285	1179	1250



6401

6401 M

Shown nested and stacked

OPTIONS

Description	Suffix	Models	Upcharge
Floor Glides	GL	All Models	85
2" Hard Surface Casters	TC	All Models	85
Armless	07	All Models	-20
Upholstered Back	UF	All Models	71
Fold Away Tablet with Arm (Left handed)	ATL	All Models	353
Fold Away Tablet with Arm (Right handed)	ATR	All Models	353
Chrome Legs	CH	All Models	78
Mesh Back	M	All Models	30

DIMENSIONS

Model	Overall Width	Overall Depth	Overall Height	Seat Height	Weight	Volume
6401	22.5"	24"	34"	17.5"	25 lbs	14.5 cu ft



STRATFORD 2000, 2011
LOUNGE

Lounge



EMILY 611
LOUNGE



DANFORTH II 1223-CH, 1222-CH
SOFA

Tablet Chairs



NXO 6401-TC
TABLET CHAIRS



BUTTERFLY 810-UFST
BAR STOOLS

Nightingale only upholsters with top quality materials. Grade 1 fabrics & vinyls listed online.

Nightingale has made every effort to represent the colours and textures of these textiles, vinyls and leathers as accurately as possible. However, we cannot guarantee 100% accuracy, due to variations that occur in the printing process.

Nightingale recommends ordering product samples before final purchase to get a more accurate representation of colour. However due to slight variations in dye lots, there can be slight colour variations to received product.

The enclosed textile collection is current and accurate at the time of printing, however the availability of patterns and colours listed may change without notice. Nightingale does not guarantee textile availability.

Please refer to our website www.nightingalechairs.com/textiles for the most current offerings and textile price grades.

Nightingale utilise seulement des matériaux de qualité supérieure pour le rembourrage.

Retrouvez nos tissus et vinyles en grade 1 au www.nightingalechairs.com/textiles

Nightingale a déployé tous les efforts pour représenter les couleurs et les textures de ces tissus, les vinyles et les cuirs le plus fidèlement possible. Toutefois, nous ne pouvons garantir la précision à 100% en raison des variations occasionnées par le processus d'imprimerie.

Nightingale recommande de se procurer un échantillon avant la commande finale afin d'obtenir avec exactitude la bonne couleur. Toutefois en raison des légères variations de teinture, il peut y avoir une légère variation dans la couleur dans le produit reçu.

La collection ci-jointe est actuelle et précise au moment de l'impression, toutefois la disponibilité des patrons et couleurs listés peuvent changer sans préavis.

Veuillez-vous référer à notre site internet www.nightingalechairs.com/textiles pour les plus récents grades de tissu.

NIGHTINGALE CORPORATION

2301 Dixie Road
Mississauga, ON L4Y 1Z9
nightingalechairs.com

EGON SZENTTAMASY

Vice-President of Commercial Sales
egon@nightingalechairs.com
(905) 896-3434 x 239



Toll Free: 1 (800) 363-8954
Toll Free Fax: 1 (800) 637-6784



Made in a 100% waste free manufacturing facility.

ISO 14001 & ISO 9001 CERTIFIED
TB117-2013 COMPLIANT