



HYDE CV PARCHMENT



EVO CV ASH



PUTTY



PEWTER



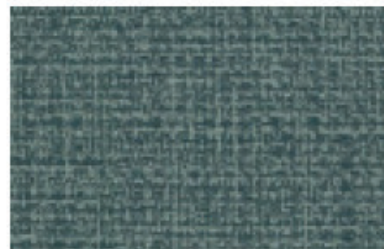
VANGUARD CV FOIL



PEBBLE



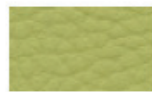
FRENCH



LINEN CV CYPRUS



TRIBECA CV CLOUD



PERIDOT



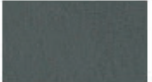
LONDON



TANGELO



BLUET



JETTY



CREME



LUNETTE



SPRUCE



PARCHMENT



SKY



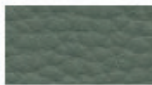
MICA



CASCADE



CELADON



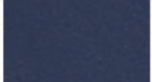
FERN



CORK



KELLY



BLUESTAR



GILDED



SAVOR



AUTUMN



MANDARIN



JADE



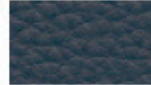
DOWNPOUR



MARINER



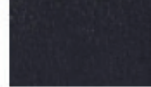
FOSSIL



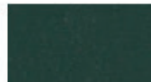
INKWELL



AQUA



INDIGO



CYPRESS



SPROUT



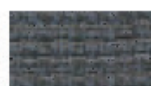
CAVE



SEQUOIA



KHAKI



CADET



RUBINE



PLUME



CYPRUS



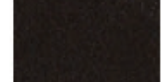
ONYX



SADDLE



MINK



ONYX



CALICO



STEEL



CARBON



NICKEL



CHARCOAL



SHADOW



SLATE

## TECHNICAL INFORMATION

Pattern Width	Fiber Content	Finish	Abrasion	Lightfastness	Cleaning Code
EVO CV - 54"	100% Clean Vinyl/ Phthalate Free	Protective Topcoat	1,000,000 D.R	Class 4 200 hours	WS/BC (10:1)
HYDE CV - 54"	100% Clean Vinyl/ Phthalate Free	Protective Topcoat	1,000,000 D.R	Class 5 200 hours	WS/BC (10:1)
LINEN CV - 54"	100% Clean Vinyl/ Phthalate Free	Protective Topcoat	288,000 D.R	Class 4.5 200 hours	WS/BC (10:1)
TRIBECA CV - 54"	100% Clean Vinyl/ Phthalate Free	Protective Topcoat	100,000 D.R	Class 4 200 hours	WS/BC (10:1)
VANGUARD CV - 54"	100% Clean Vinyl/ Phthalate Free	Protective Topcoat	100,000 D.R	Class 4 200 hours	WS/BC (10:1)

Cleaning Codes:

WS - Water based cleaning agents or foam may be used.