

AIR FORCE SEATING BPA SPIRAL II

Contract # FA800320A0001



 **Nightingale**

nightingalechairs.com

To place your order or request a price quotation please contact airforce@nightingalechairs.com 800-363-8954

Freight charges apply to orders of 1-5 cartons, orders of 6 or more cartons dock to dock shipping is included.

All products are backed by
Nightingale's Lifetime Limited Warranty.

Nightingale Corp.

DUNS- 081141117

Cage Code- 82Z73

Tax ID- 98-0383583

Visit nightingalechairs.com for more information



When you purchase from Nightingale we want you enjoying your chair as soon as possible.

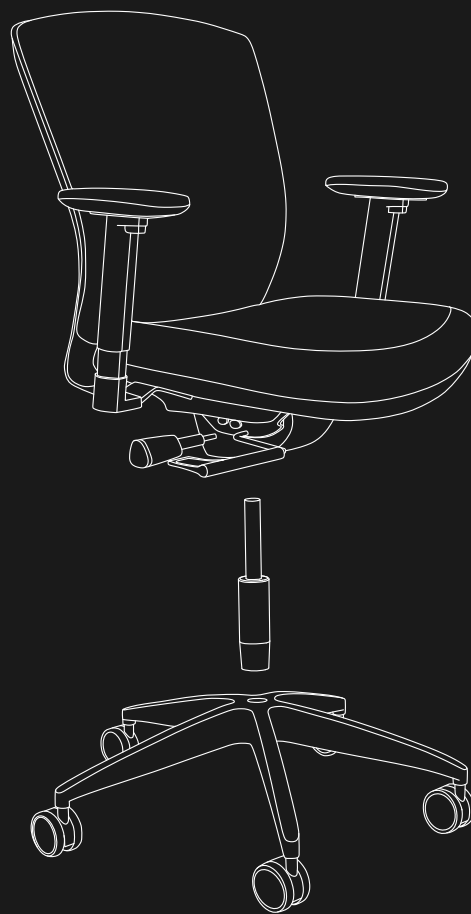
We do not want you to have to mess with little tools or confusing instructions. Our chairs are quality tested and fully built in our factory by trained professionals. All of our chairs ship one of two ways, fully assembled in the box or fully assembled, knocked down.

We make the procurement process as easy as possible, we want the delivery of your chairs to be no different.

All products are backed by Nightingale's Lifetime Limited Warranty.



FULLY ASSEMBLED



FULLY ASSEMBLED - KNOCKED DOWN

**If a chair ships knocked down all components of the chair will be assembled, all that will be required will be to insert the gas lift into base and place the seat ontop.*

**note for models with adjustable, field installable headrests the headrest will need to be attached upon assembly.*

Nightingale Corp.

Visit nightingalechairs.com for more information

EX.LL

335D EC3

The EC3 evokes a clean aesthetic and polished feel. With it's full-back and spring support system built into the molded foam, the EC3 combines ergonomic support with modern style.



FEATURES

A. INTERGRATED HEADREST

Extra support for your neck and back to ease bodily fatigue. (Model 335D)

B. LUMBAR SUPPORT

Full back spring system built into the molded foam for dynamic support. Lumbar support from 5.5" to 19" range (Model 335 and 335D) provides upper thoracic (23"-30").

C. POLISHED ALUMINUM ARMS

Sleek, contoured arms with polyurethane or optional leather/vinyl arm pads provide user comfort and support.

D. BASE AND CASTERS

5-prong, polished aluminum base with 3" dual-wheel carpet casters.

E. MECHANISM

Our sleek, synchro-tilt swivel mechanism features multi-position tilt lock with slow release, pneumatic height adjustment, and side tension control.

OPTIONAL MODELS



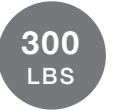
335
Mid Back
Executive



335-A
Mid Back
Adjustable Arms



335D-A
High Back
Adjustable Arms



CR.MU

7280MTL VXO

The VXO™ offers a simple, lightweight design that delivers remarkable comfort and dynamic support. Its easy to adjust lumbar support keeps you focused on what's at hand.



OPTIONAL MODELS



7280
Mid Back
Task



7280-07
Armless

FEATURES

A. LUMBAR SUPPORT

Static lumbar support. Located at 5.5" to 14" above compressed seat height. Independent adjustable lumbar support with 4" vertical range.

B. MECHANISM

Swivel tilt mechanism with single position tilt lock and tilt tension control. (Optional multi-tilt mechanism available)

C. NEBULA MESH

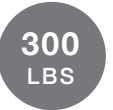
Opaque nebula mesh back.

D. LOOP ARMS

Fixed loop arms.

E. BASE AND CASTERS

Heavy duty nylon base with 2" carpet casters.



CR.UU 135 EC1

The EC1 is a classic conference chair with a simple style to enhance any boardroom aesthetic.



FEATURES

A. LUMBAR SUPPORT

Static lumbar support located at 5.5" to 17" above compressed seat height.

B. MECHANISM

Sleek, synchronous mechanism with pneumatic height adjustment, swivel, and tension control.

C. SEAT DEPTH ADJUSTMENT

For those requiring more leg support.

D. ENERSORB™

Seat and back foam conforms to your body and disperses your weight ergonomically.

E. FIXED ARMS

Fixed nylon arms.

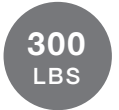
F. BASE AND CASTERS

Black nylon base with 2" dual wheel carpet casters.

T.MU

2100 BLESS

The Bless is an ergonomic task chair that is high performing but reasonably priced. With its breezy back and easy adjustments, the Bless is a perfect choice for modern workstations.



FEATURES

A. LUMBAR SUPPORT

Located at 5.5" to 13" above compressed seat height. Independent adjustable lumbar support with 4" vertical range.

B. 4D ARMS

Arms feature pivoting arm pads with a 30° range of motion inward and outward, height (3"), width (2.5") and depth adjustment (3").

C. MECHANISM

Self-weighted mechanism for the perfect tension with tilt lock. Pneumatic height adjustment and built-in seat slider. All controls clearly labeled and adjustable from a seated position.

D. BASE AND CASTERS

Glass reinforced nylon base with standard dual-wheel carpet casters.

T.UU 7000 VERONNA

The Veronna is a stylish and colorful ergonomic executive task chair. It has a classic yet contemporary form and maximum ergonomic support that make it ideal for any office environment.



FEATURES

A. ENERSORB™

Seat and back foam conforms to your body and disperses your weight ergonomically.

B. LUMBAR SUPPORT

Adjustable lumbar with a 3" travel to provide support in the lower back. Static range of 5.5" - 18".

C. 4D ADJUSTABLE ARMRESTS

Arms feature pivoting arm pads with a 30° range of motion inward and outward, height (4"), width (2.5") and depth adjustment (3").

D. WATERFALL SEAT

Waterfall seat design gently slopes away from the legs, minimizing pressure on the thighs and promoting good posture.

E. MECHANISM

Synchronous swivel tilt mechanism with multi-position tilt-lock, pneumatic height adjustment, and tension control. Built-in integral seat slider, 2.5" adjustable seat depth.

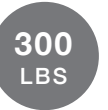
F. BASE AND CASTERS

5-prong heavy duty black nylon base with 2" dual wheel casters.

EX.UU

3400D KHROMA

An affordable, premium executive chair, the Khroma combines ergonomic support with exceptional styling. Its high-powered finish and comfortable seat lend a presidential feel to your office space.



FEATURES

A. LUMBAR SUPPORT

Static lumbar support located at 5.5" to 14" above compressed seat height. Built in thoracic support located at 18" to 27" above compressed seat height.

B. MECHANISM

Swivel knee-tilt mechanism, complete with intuitive tension control, single position tilt lock, height adjustment pneumatic lift.

C. BACK AND SEAT

Fully upholstered Enersorb™ Memory Foam seat and back.

D. ARMS

Fully upholstered padded arm pads for enhanced comfort and executive feel. Sloped fixed arm provides multiple resting surfaces while relaxing or working.

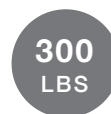
E. BASE AND CASTERS

Polished aluminum base with carpet casters.

GS.UU

502 CRICKET II

With its bright colors and stackability, the Cricket II adds a pop of fun to any common space! The perfect guest chair for multi-use functions.



OPTIONAL MODELS



502CA
Stacker with
casters



503
Armless

FEATURES

A. STATIC LUMBAR SUPPORT

Located at 4" to 15" above compressed seat.

B. FRAME

4 leg 16-gauge heavy duty tubular steel frame with glides.

C. WATERFALL SEAT

Waterfall seat design gently slopes away from the legs, minimizing pressure on the thighs and promoting good posture.

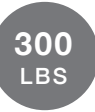
STANDARD CONFIGURATION

4 leg frame with upholstered seat and back on glides. Stacks 6 high free standing, 10 high on dolly.

GS.MU

200MUFST FIREFLY II

The Firefly II is a part of our stackable collection. They're functional, flexible, strong, and versatile. Perfect solution for any environment.



FEATURES

A. TRANSLUCENT ABLEX MESH

Allows for comfortable air circulation and dynamic ergonomic support.

B. UPHOLSTERED SEAT

Optional upholstery provides a comfortable sit in any environment.

C. WATERFALL SEAT DESIGN

To reduce muscle fatigue.

D. STEEL FRAME

No fuss, sturdy frame with angled legs for strength and stability.

TEXTILES - QUICK SHIP STANDARD OPTIONS



MYSTIC

Mystic is a breathable stretch material that is designed to enhance the comfort of any chair. The subtle waffle pattern allows it to blend seamlessly into any office design. It boasts an abrasion resistance of 100,000 double rubs. To care for Mystic spot clean with an environmentally friendly water soluble cleaner or simply wipe with a damp micro fibre cloth.



FOUNDATION

Foundation is our most durable fabric with an abrasion rating of over 600,000 double rubs. It is a solid color material with 18 standard color choices. To care for Foundation spot clean with an environmentally friendly water soluble cleaner or simply wipe with a damp micro fibre cloth.



FAUX LEATHER - STANDARD VINYL

Our Standard Vinyl provides an executive look and comfortable feel. It is also perfect to help repeal stains and keep things nice and tidy. 11 standard color choices and an abrasion resistance of over 100,000 double rubs. To care for Standard Vinyl spot clean with an environmentally friendly water soluble cleaner or simply wipe with a damp micro fibre cloth.



MADRAS LEATHER

Our Madras Leather is a Top Grain Embossed High Grade Leather. It provides a luxurious feel and true Executive look. Available in 13 standard colors. Care instructions- Leather will repel 'some' moisture, water, oils and other liquids can eventually stain it. If stains occur, dry them by tapping/dabbing out stains with a soft, dry cloth. Avoid pressing hard in one small area. Then buff to a shine with a dry cloth. Dust on a weekly basis with a soft cloth or vacuum with a soft brush. Gently warming and rubbing with a soft cloth to redistribute the oils in the leather can remove some superficial scratches. Do not use normal household cleaning products.



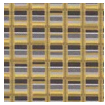
Note: additional textile options available, please contact airforce@nightingalechairs.com for more information.

TEXTILES

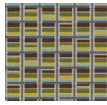


FABRIC (45 DAY LEAD TIME)

ALIGNMENT



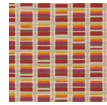
TWIST



SUBLIME



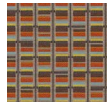
POOLSIDE



SUMMER



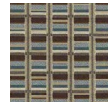
NEUTRAL



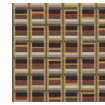
WILDCARD



SANGRIA



HARBOUR



URBAN

ANAGRAM



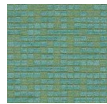
MAGNETIC



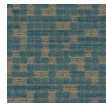
ZING



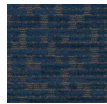
TORCH



AZURE



AEGEAN



NOCTURNE



ESPRESSO



MIDNIGHT

BRILLIANT



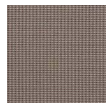
SANDBAR



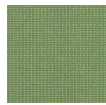
GLOW



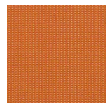
SAPPHIRE



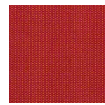
IRON



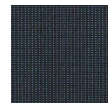
PARROT



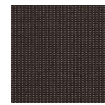
TORCH



POPPY



INK



NOIR

CONCENTRIC



CURVE



DIAMETER



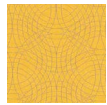
RING



RADIUS



SPHERE



HALO



CORONA

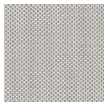


SPIRAL



OUTLINE

REFRACTION



FOIL



GUAVA



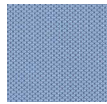
ROBUST



COSMOS



IONIAN



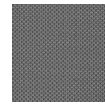
DELFT



PAPAYA



LODGE

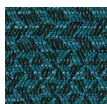


SHALE

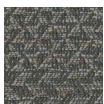
FEEDBACK



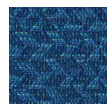
BRINDLE



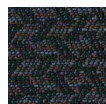
OCEAN



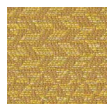
PEWTER



ROYAL



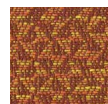
EBONY



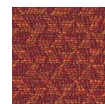
SUNFLOWER



GREEN TEA



SAFFRON



CINNABAR

Note: additional textile options available, please contact airforce@nightingalechairs.com for more information.

TEXTILES



FABRIC (45 DAY LEAD TIME)

HIGHLIGHT



SOLEIL



FIJI



SUNGLOW



INFRARED



SHAMROCK



CARMINE



IRIS



LIDO



ANVIL

PORTOFINO



SUNGLOW



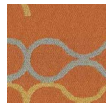
ECRU



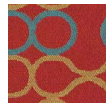
VERDE



AZURE



TANGELO



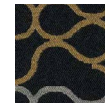
RED



PURPLE



NAVY



EBONY

QUADRILLE



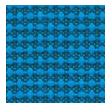
LEISURE



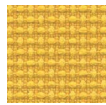
FAIR



SPRING



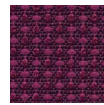
REVELRY



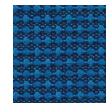
ZEST



FIESTA



JUBILEE

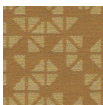


SOIREE



OPUS

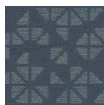
LEXICON



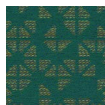
CORNSILK



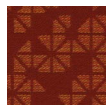
APRICOT



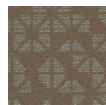
SLATE



TEAL



SCARLET



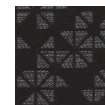
TAN



PEWTER



MIDNIGHT



GRAPHITE

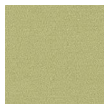
PIVOT



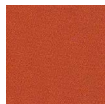
GRIGIO



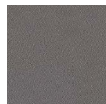
CURACAO



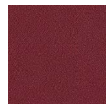
FENNEL



CHAI



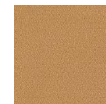
PEWTER



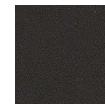
DAHLIA



SPRUCE

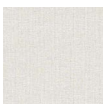


SAVANNAH



VESPER

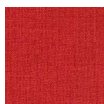
SHIFT



CIRRUS



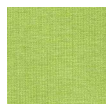
PEONY



POPPY



ORO



MARGARITA



TAHITI



VALLEY



MUSHROOM



MAGNET

Note: additional textile options available, please contact airforce@nightingalechairs.com for more information.

TEXTILES

VINYL (45 DAY LEAD TIME)

TURNER



LEATHER (45 DAY LEAD TIME)

LINEA



VOLO



DUBLIN



PRESCOTT



MESH (STANDARD QUICKSHIP) MESH (45 DAY LEAD TIME)



Note: additional textile options available, please contact airforce@nightingalechairs.com for more information.

ISO 14001 & ISO 9001 CERTIFIED TB117-2013 COMPLIANT

Made in a 100% waste free manufacturing facility.



DIMENSIONS DISCLAIMER

Dimensions are subject to change without notice.

Dimensions may have a variance of up to 0.5”.

Contact Nightingale if more precise measurements are needed.

TEXTILE DISCLAIMER

Nightingale only upholsters with top quality materials.

Nightingale recommends ordering product samples at www.nightingalechairs.com/textiles before final purchase to get a more accurate representation of color. However, due to slight variations in dye lots, there can be slight color variations to received product.

Nightingale has made every effort to represent the colors and textures of these textiles, vinyls and leathers as accurately as possible. However, we cannot guarantee 100% accuracy, due to variations that occur in the printing process.



nightingalechairs.com

800 363 8954