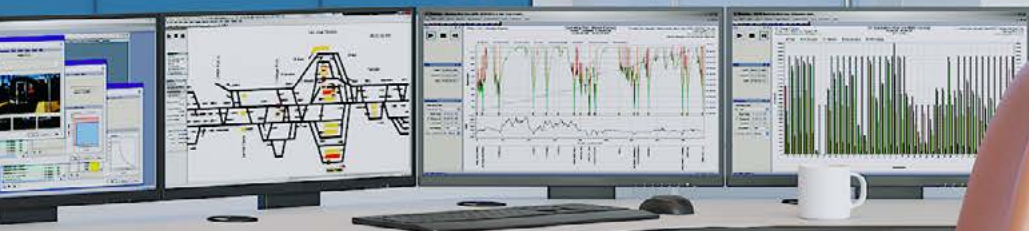


SHERMAN HD

 *Nightingale*



NOTICE
EMERGENCY
EXIT
DO NOT
BLOCK
DOOR



9000 Series

nightingalechairs.com

DURABLE, RELIABLE

A chair you can count on, the Sherman HD was designed for high-activity, 24-hour work environments. It is built with premium quality, reinforced steel to withstand whatever the day throws at you.



HD9000-DS RATED FOR

350lbs

3
SHIFTS
A DAY

24
HOURS



HD9000 RATED FOR

450lbs

3
SHIFTS
A DAY

24
HOURS

Sherman HD9000
Milestone (Linger)

FEATURES

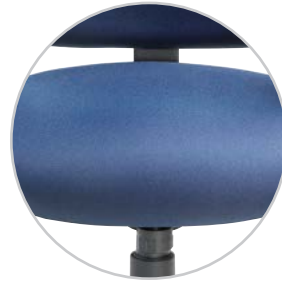
The Sherman HD is an incredibly strong chair ideal for law enforcement, security, or other 24-hour workspaces.





1 MECHANISM ADJUSTMENT

Easily adjust to your desired height, tilt, seat depth, and tension so you can work with correct posture.



2 REINFORCED STEEL

Reinforced steel seat and back topped with molded foam for comfort and durability.



3 LUMBAR SUPPORT

Built in lumbar support.



4 ADJUSTABLE ARMS

Heavy duty steel fold away arms that are height and width adjustable with high durometer polyurethane arm pads.



5 BASE

29" 5 prong, structurally engineered aluminum base available with 3" carpet casters or soft tile casters.



6 HEAVY DUTY FOOT RING

In applications where a drafting stool is required, an adjustable foot ring allows for custom leg support, reducing pressure on the thighs.



Sherman 9000
Premier (Meadow)



ISO 14001 & ISO 9001 CERTIFIED TB117-2013 COMPLIANT

Made in a 100% waste free manufacturing facility.



DIMENSIONS DISCLAIMER

Dimensions are subject to change without notice.
Dimensions may have a variance of up to 0.5".
Contact Nightingale if more precise measurements are needed.

TEXTILE DISCLAIMER

Nightingale only upholsters with top quality materials.

Nightingale recommends ordering product samples at www.nightingalechairs.com/textiles before final purchase to get a more accurate representation of color. However, due to slight variations in dye lots, there can be slight color variations to received product.

Nightingale has made every effort to represent the colors and textures of these textiles, vinyls and leathers as accurately as possible. However, we cannot guarantee 100% accuracy, due to variations that occur in the printing process.



nightingalechairs.com

800 363 8954